



Customer: Colorado Breeders Depot
Address: 596 McDaniels Blvd
Canon City, CO 81212
Sample ID: Cherry Haze Flower
Matrix: Biomass
Labnumber: 21D0282-01

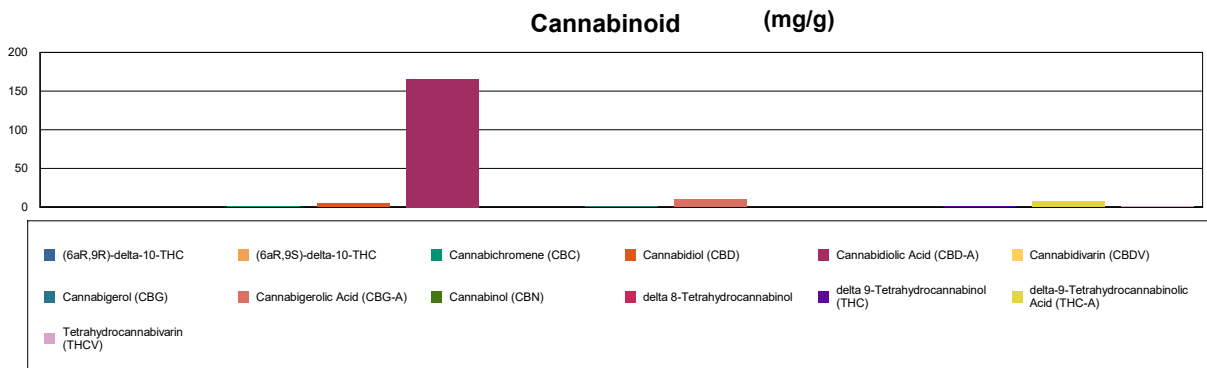
Cannabinoid Profile

Test Conditions: 18°C
Extraction Technician: SH
Analytical Chemist: SH

Extraction Date(s)	Analysis Date(s)
4/21/2021	4/21/2021

Cannabinoids (HPLC)	Results		
	LOD (mg/g)	%	mg/g
Cannabidiol (CBD)	<0.20		
Cannabidiolic Acid (CBD-A)		16.59	165.9
Cannabigerolic Acid (CBG-A)		1.00	10
Cannabigerol (CBG)		0.09	0.9
Cannabidiol (CBD)		0.46	4.6
Tetrahydrocannabivarin (THCV)		0.04	0.4
Cannabinol (CBN)	<0.20		
Cannabichromene (CBC)		0.05	0.5
delta 9-Tetrahydrocannabinol (THC)		0.07	0.7
delta-9-Tetrahydrocannabinolic Acid (THC-A)		0.73	7.3
delta 8-Tetrahydrocannabinol	<0.20		
(6aR,9S)-delta-10-THC	<0.20		
(6aR,9R)-delta-10-THC	<0.20		
Cannabinoids Total		%	mg/g
Max Active THC (delta-9-tetrahydrocannabinol)		0.71	7.10
Max Active CBD		15.06	150.63
T.Active Cannabinoids		0.68	6.81
Total Cannabinoids		19.00	190.00

Following USDA guidelines on uncertainty, Altitude Consulting's uncertainty is calculated to be +/- 2% for all cannabinoids using a coverage factor of 2 (95% confidence interval). Measurement uncertainty has not been factored into reported values.
Blank results indicate the compound was below the limit of detection.



Gary Brook - Laboratory Director - 4/22/2021

Reporting Limits will vary based on sample extraction weight used for the analysis.

The results of this report are based solely on the sample submitted and cannot be reproduced. Decision Rule: Measurement uncertainty is not accounted for in the reported values. Results are based solely on calculated numbers. Altitude Consulting makes no Statements of conformity. **Pesticide, metal, and microbial analyses are subcontracted to ISO 17025 laboratories.**